

User Guide for Virtual Screening Room Exhibitors

Once your booking is confirmed the next steps are:

1

RECEIVE DETAILS

You will receive a list of login **credentials** (sets of unique usernames/passwords) as an excel attachment to an email confirming event details:

- Film Title
- Event Date & Time
- Audience Size
- The URL (web link to the log-in page): <https://vsr.filmbankconnect.com>



When?

3 working days
before your event

2

SEND LOGINS TO YOUR AUDIENCE

Send each member of your audience one set of credentials, the URL, the event date & start-time and instructions including **technical requirements**.



When?

1-3 working days
before your event

3

LOG IN EARLY

Your VSR opens 2hrs before the film start-time (selected during booking), use this time to:



Introduce the film and set the tone for the chat.



Encourage your audience to:

- Test their setup
- Choose a screen name to join the chat.



Troubleshoot any issues you or your audience are having.



When?

2 hours before the film start time

4

STAY LATE AND CHAT

Chat with your audience after the film; your VSR stays open for 24hrs after the film.



When?

24 hours after the film



TECHNICAL REQUIREMENTS

Device					
	Laptop*	PC*	Tablet	Phone	Other
Watch Film	✓	✓	- (chat only)	- (chat only)	-
Chat	✓	✓	✓	✓	-

*Window or macOS

Browser					
	Chrome	Edge	Safari	Firefox	Internet Explorer
Watch Film	✓	✓	✓	✓	-
Chat	✓	✓	✓	✓	-



>5Mbps

Connection speed of **over 5Mbps** is required (>10Mbps and closing other tabs/software is recommended).



'Mirroring' and 'Casting' are not supported for security reasons.

User Guide for Virtual Screening Room Exhibitors

Log-in screen and before the film starts:

1 FOLLOW THE LINK AND LOG IN

virtual screeningroom

Username *

Username *

Password *

Use of, and access to, the Virtual Screening Room is governed by the VSR Terms & Conditions

Sign In

Beacon Hill Film Society Presents: virtual screeningroom

The film starts streaming in:

Days	Hours	Minutes	Seconds
0	0	1	16

Test Setup

Choose Nickname to join the room

Nickname

2 Test Setup

Use 'Test Setup' to play a short video and ensure everything is working as it should.



3 JOIN THE CHAT

virtual screeningroom

He's such a talent

Sam 07:18
I agree, he's already gone on to do other great work

Jay 07:19
He's got a shining career ahead of him

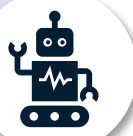
Jay 07:19
New Zealand is so photogenic

Max 07:20
Most of the films shot there make me want to jump on a plane!

Sam 07:20
We've been there specifically to visit some of places we'd seen on screen

Jay 07:21
I think it's really impressive how the cast are able to find that balance of comic and dramatic

Sam 07:22
I really enjoy seeing comic actors in dramatic roles



AUTOMATIC START

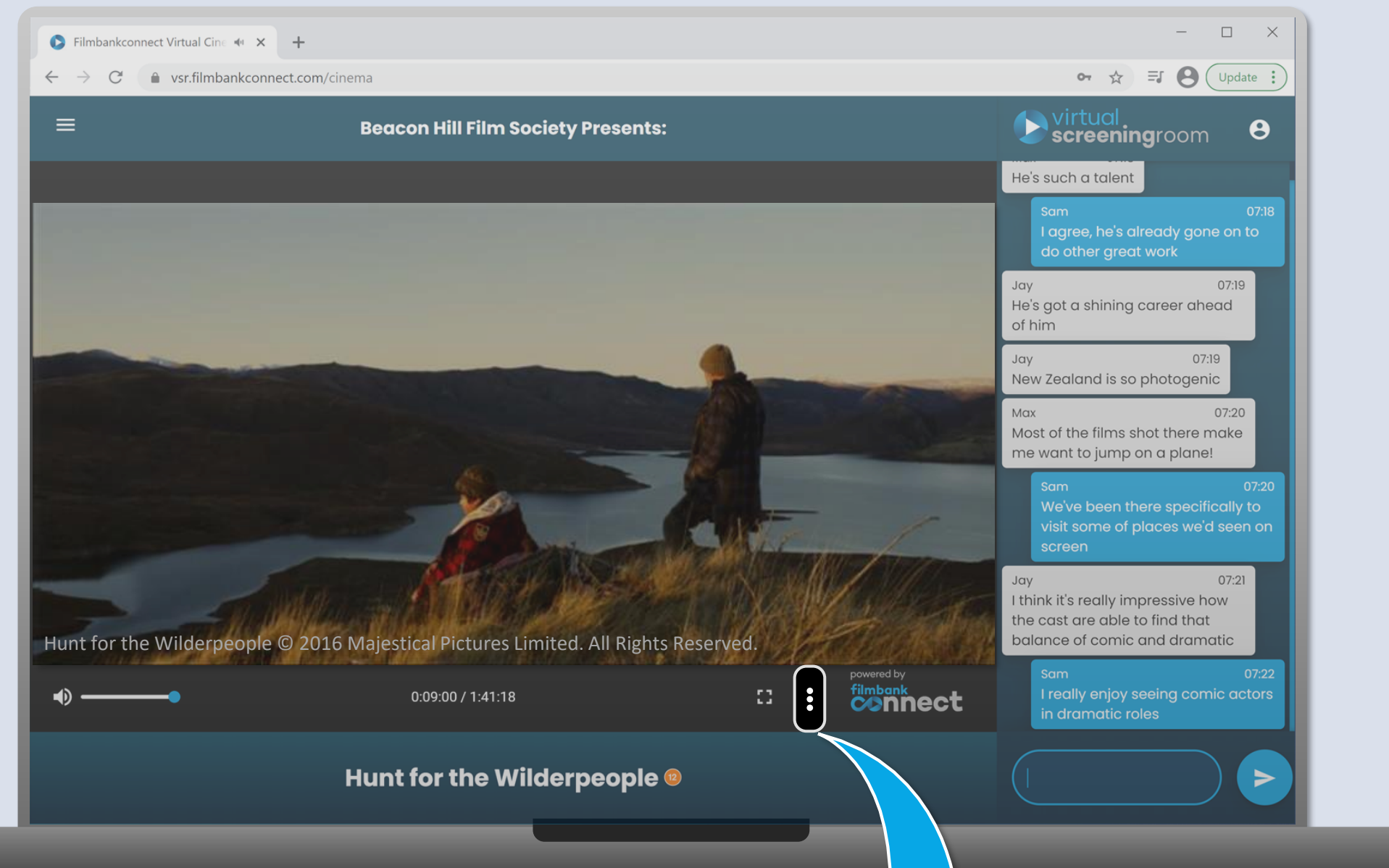
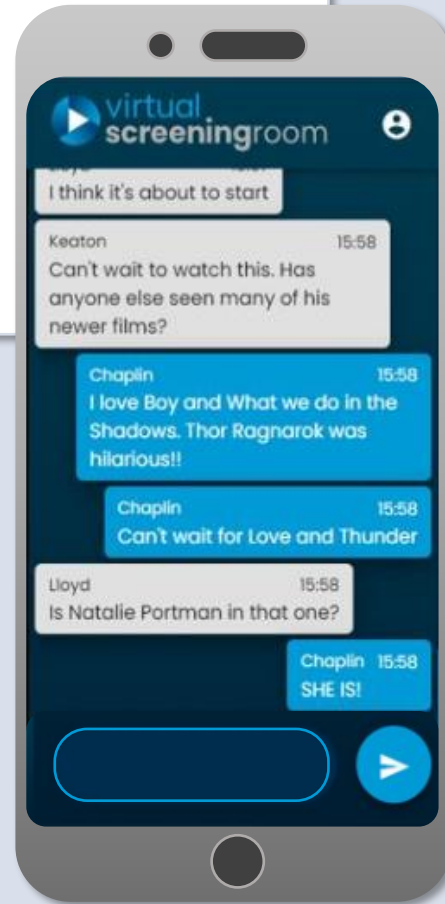
The film starts at the same time for all audience members.

User Guide for Virtual Screening Room Exhibitors

Options for your audience members:

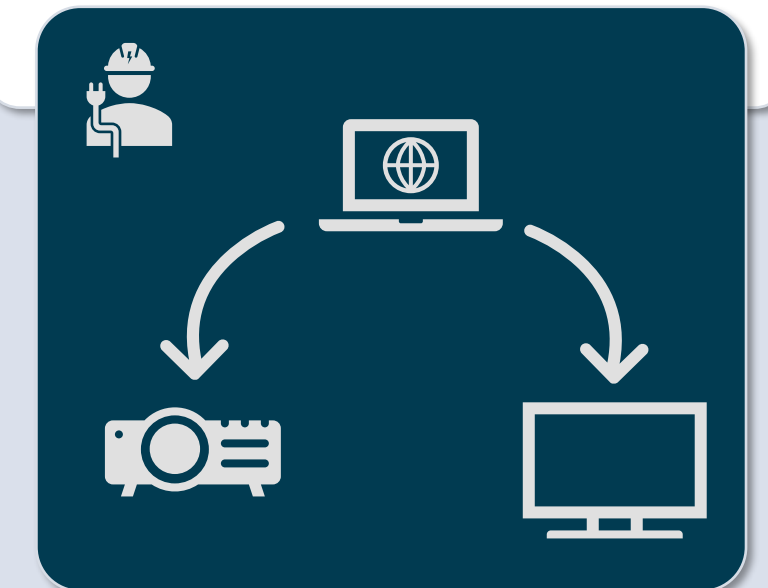
CHAT ON A 2nd SCREEN

Use the same login on a 2nd device to keep chatting if the film is full-screen.



CONNECT TO A BIG SCREEN

Use an HDMI cable to connect your computer to a Projector, TV or Monitor.



SELECT YOUR LANGUAGE

Audience members can individually select their preferred language (audio/ subtitles where available).

